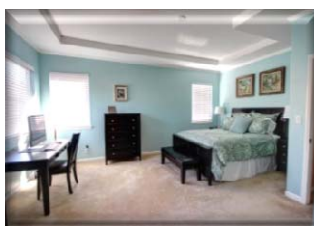
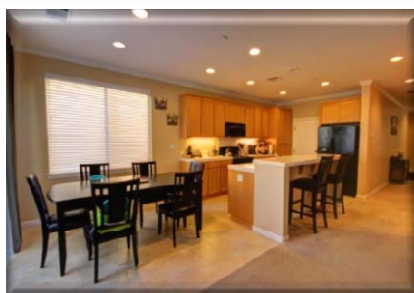
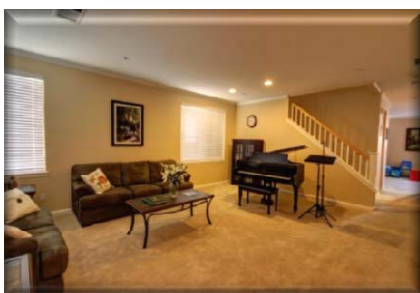


# CUTE AND CLEAN!



For a Virtual Tour and to Search the MLS:  
[www.SharpHomesOnline.com](http://www.SharpHomesOnline.com)



## 362 Topaz Street, Brentwood

*Turn over for floor plan/payment options*

## \$359,900

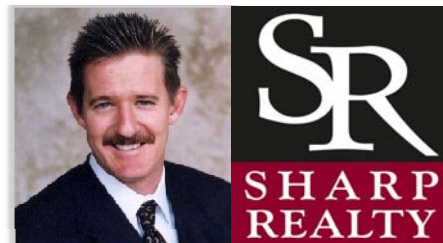
**BEDS: 4**  
**BATHS: 2.5**  
**SQ FT: 2,226**  
**YEAR: 2004**  
**LOT: 3,281**

- Two-tone interior paint.
- Crown moulding for that "classy" look.
- Light and bright with neutral colors.
- Cozy gas fireplace in family room.
- Lovely slate rear patio.
- Washer/dryer/refrigerator are negotiable.
- Close to Garin Elementary School and large park.
- Located in popular Garin Landing, part of Garin Ranch.
- Four true bedrooms.
- Two car garage.

**Brian Sharp**  
**Cell: (925) 998-9712**

Brian@SharpHomesOnline.com  
#1 FOR BRENTWOOD LISTINGS  
SOLD SINCE 2000

BRE #: 01245186  
320 Fairview Ave., Brentwood



Financing Options Presented By:  
**CYNTHIA ULRICKSEN**

The Ulricksen Team - "Unparalleled Personal Service"  
 (925) 513-9211 or (925) 285-1825

**\$359,900**

*Delta Lending Group is a division of Pinnacle Capital Mortgage, Equal Housing Lender, MLO #81395. Licensed by the Department of Corporation under the California Residential Mortgage Lending Act.*

Payments are principal & interest only & do not include property taxes, hazard insurance or mortgage insurance.

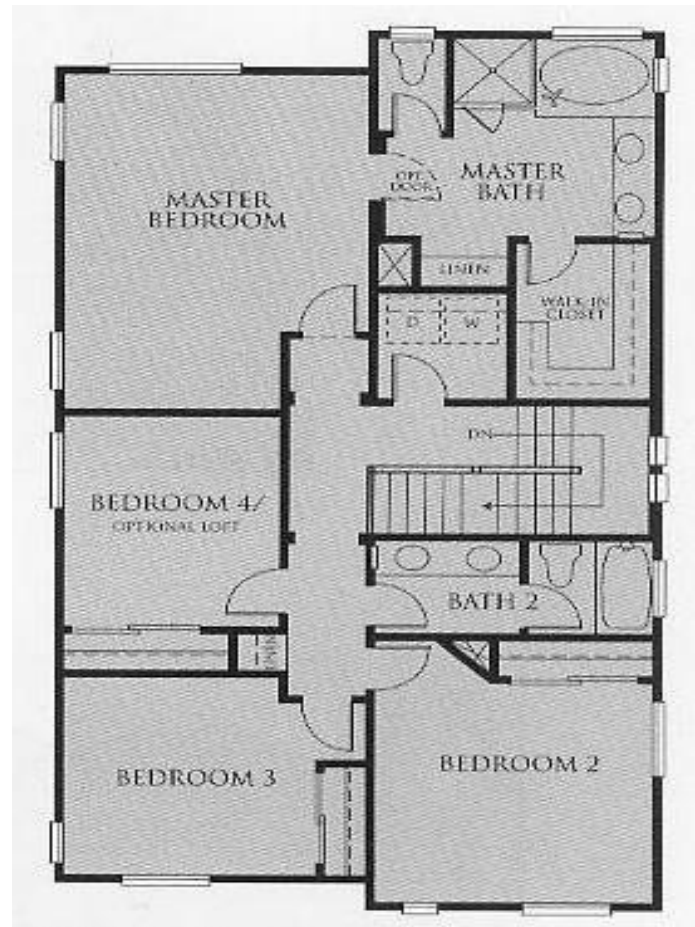
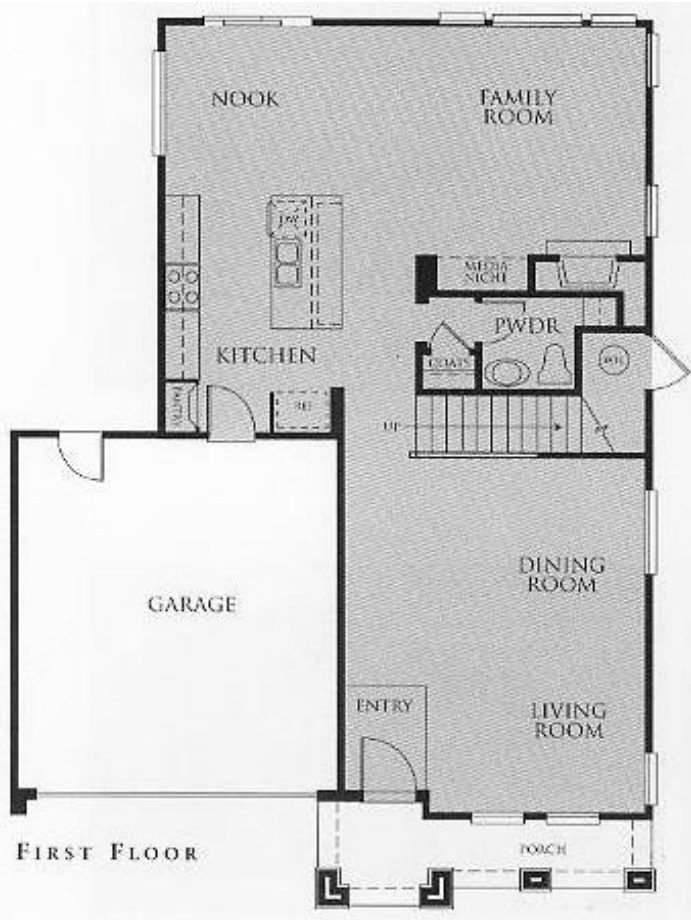
**RATES AND PAYMENTS WITH 20% DOWN PAYMENT**

Program	Down Payment	Loan Amount	Rate	APR	Payment
30 Yr Fixed	\$71,980	\$287,920	4.875%	5.025%	\$1,524

**RATES AND PAYMENTS WITH 3.5% DOWN PAYMENT FHA**

Program	Down Payment	Loan Amount	Rate	APR	Payment
30 Yr Fixed	\$12,597	\$347,304	4.500%	4.636%	\$1,760

The payment option sheet above is provided for informational purposes only and should not be relied upon by you. Sharp Realty is not a mortgage lender. You should contact Cynthia at Delta Lending to learn more about their mortgage products and your eligibility for such products. \*Rates subject to change daily.



*Floor plan above should not be relied upon as a 100% accurate depiction of property.*